

CW-100G Pro

DYNAMIC CHECKWEIGHER

In Line Checkweigher

CW-100G Pro is a high-speed, high-precision checkweigher for products between 5g and 100g. It features a 15-inch touch screen, servo motor system for stability, and double photoelectric sensors for accurate detection. With modular design, adjustable speed, and communication feedback, it's built for fast, efficient production lines.

Key Features

- The CW-100G Pro checkweigher is suitable for products ranging from 5g to 100g.
- Offers weighing accuracy within $\pm 0.1g$.
- Features a 15-inch touch screen with real-time data monitoring and process insights.
- Widely used in pharmaceutical, food, logistics and automated packaging applications. ,

100g

Weighing Range

$\pm 0.1g$

Accuracy

300+Pcs/min

Speed

Multiple Industrial Applications

- Pharmaceutical production lines.
- Food & beverage processing.
- Animal feed packaging.
- Animal feed packaging.
- Logistics & warehousing.
- Automation & high-speed production line.
- Chemical & manufacturing industries & much more.



SPECIFICATION SHEET

CW-100G PRO

Specifications

Model	CW-100G PRO
Maximum Capacity	100g
Scale Division	0.05g
Best Accuracy	±0.1g
Highest Weighing Speed	300 pcs/min
Belt Speed	10-70 m/min
Belt Size	200mmx150mm
Weighing Platform Height	750±50mm
Belt Material	PU (White)
Structure of Material	S304 Stainless steel
Alarm Light	3-Colour Signal Light (Red, Yellow, Green), Optional Buzzer
Display Size	15-inch Colour Touch Screen
Rejector Lineup	Options: Swint Type, Air Blow or Push Type
Power	Single Phase: AC-220V±10%, 50/60HZ, 375W
Operating Temperature	0-45°C
IP Grade	IP65

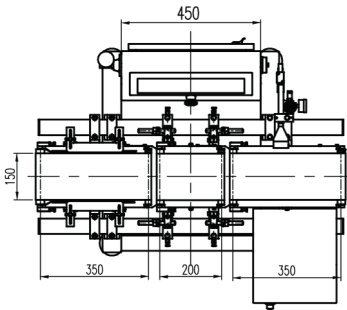
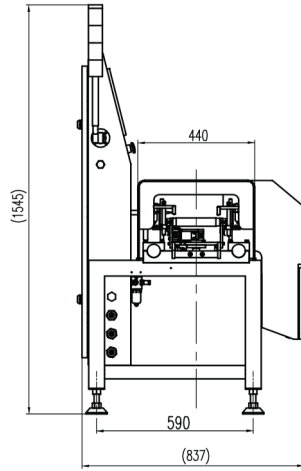
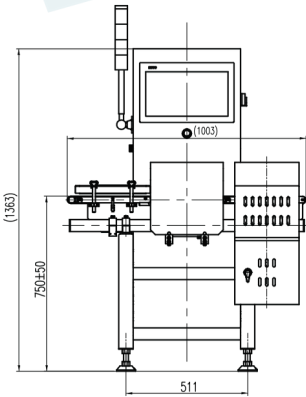
*Depending on the weight, size, and material of the test object. Test Accuracy 0.1g at 120pcs/min | 0.2g at 200pcs/min



STRUCTURE & DIMENSIONS

CW-100G PRO

Unit: mm



R&D WEIGHING
WEIGHING THE FUTURE